

# Saga Palvelutalo Salpalinna

Kyösti Kallion katu 3, 15110 Lahti

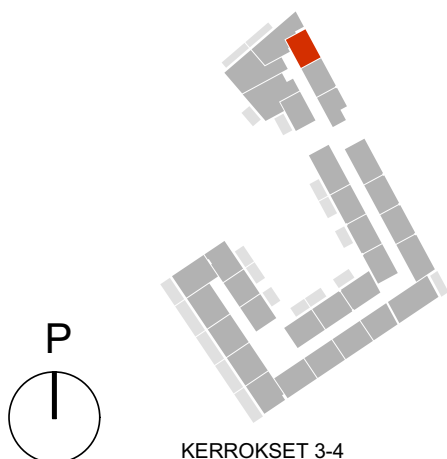
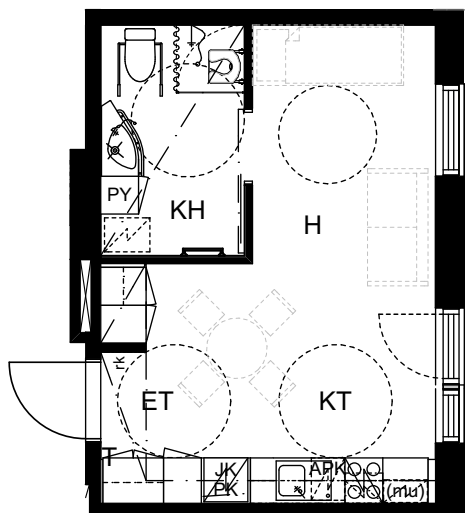
**1H+KT, 28,0m<sup>2</sup>**

D105, 1.KRS

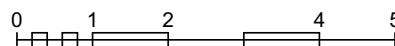
D205, 2.KRS

D305, 3.KRS

D405, 4.KRS



KERROKSET 3-4



MITTAKAAVA 1:100

HUONEISTOPOHJA

05.12.2018



ARKKITEHTIPALVELU .fi