

Saga Palvelutalo Salpalinna

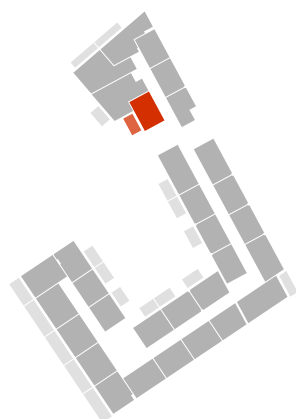
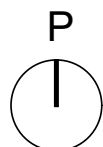
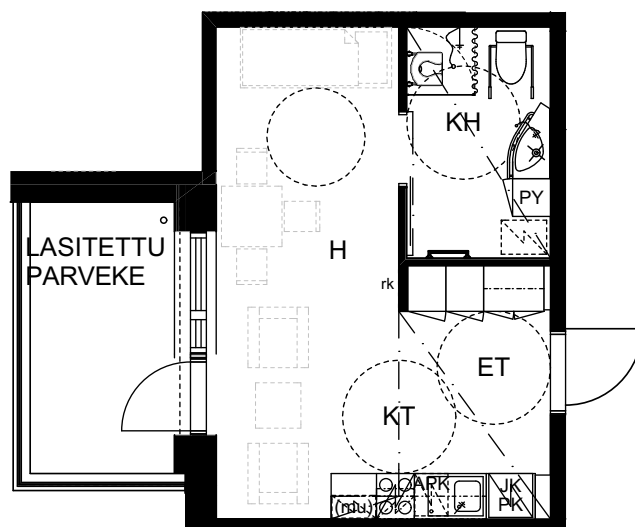
Kyösti Kallion katu 3, 15110 Lahti

1H+KT+parveke, 28,5m²

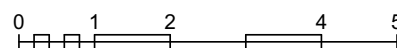
D202, 2.KRS

D302, 3.KRS

D402, 4.KRS



KERROKSET 3-4



MITTAKAAVA 1:100

HUONEISTOPOHJA
05.12.2018



ARKKITEHTIPALVELU .fi