

Saga Palvelutalo Salpalinna

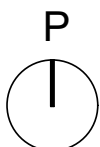
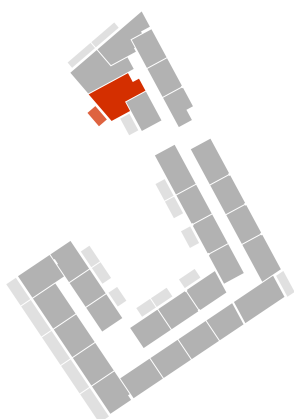
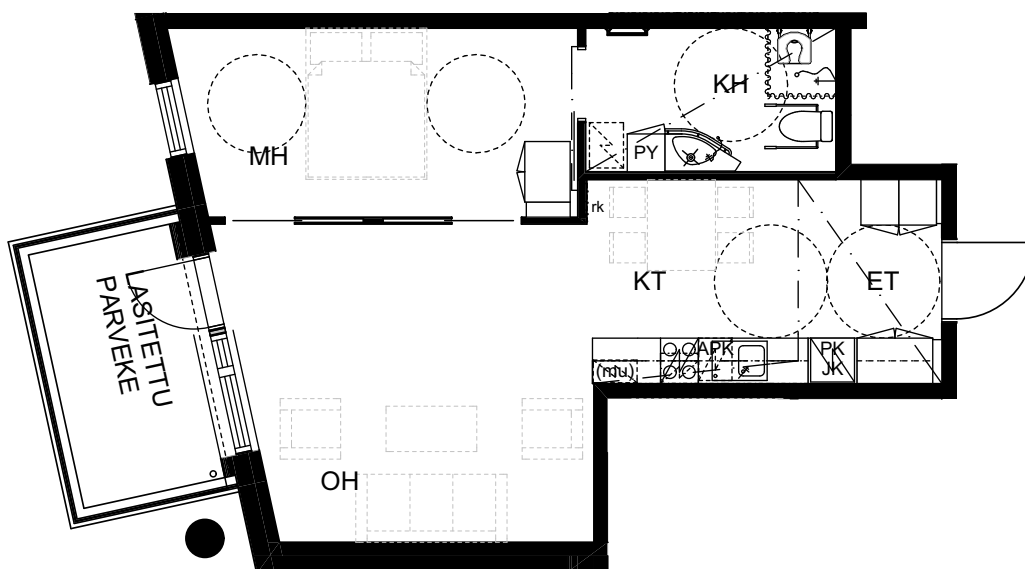
Kyösti Kallion katu 3, 15110 Lahti

2H+KT+parveke, 52,0m²

D204, 2.KRS

D304, 3.KRS

D404, 4.KRS



KERROKSET 3-4



MITTAKAAVA 1:100

HUONEISTOPOHJA

05.12.2018



ARKKITEHTIPALVELU .fi