

Saga Palvelutalo Salpalinna

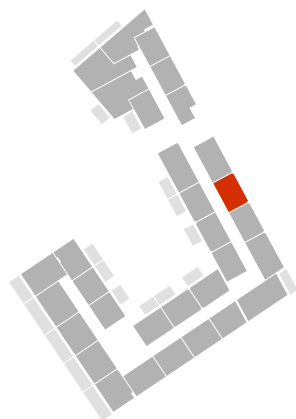
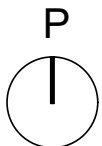
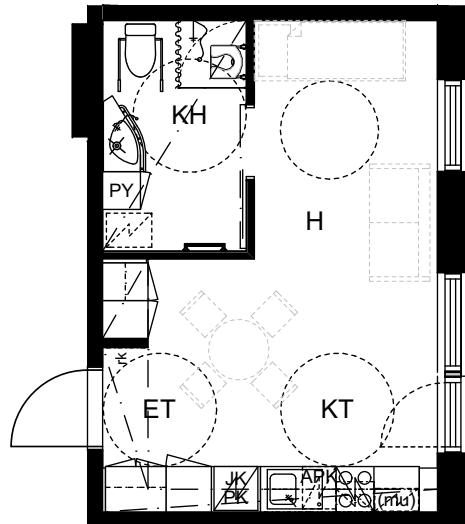
Kyösti Kallion katu 3, 15110 Lahti

1H+KT, 29,0m²

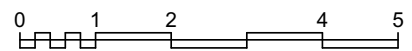
D211, 2.KRS

D311, 3.KRS

D411, 4.KRS



KERROKSET 3-4



MITTAKAAVA 1:100

HUONEISTOPOHJA

05.12.2018



ARKKITEHTIPALVELU .fi